

Application Examples

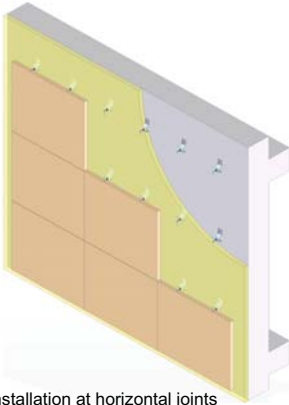
Natural Stone Fixing Systems - Direct Installation

HZ02 Z Anchor fixing system:

- Fixing to concrete with expansion bolts. 20-50 mm stone thicknesses are applicable.
- Projection sizes up to 135mm.
- Recommended loads up to 800 N.
- Installation at horizontal and vertical joints.



HZ02Z Anchor



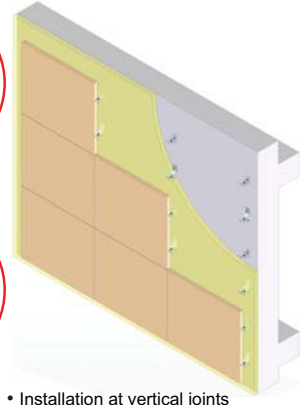
• Installation at horizontal joints



HZ02Z Anchor



HRS1 Restraint Anchor



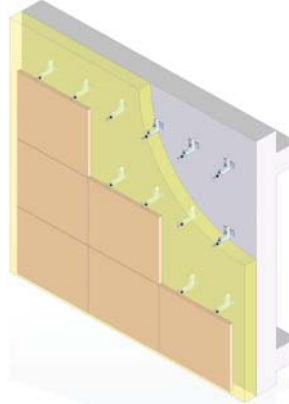
• Installation at vertical joints

AX04 Body Anchor fixing system:

- Fixing to concrete with expansion bolts.
- Projection sizes up to 260 mm.
- Recommended loads up to 1300 N.
- Optimum static performance.
- Economic when installing at high projection.



AX04 Body Anchor



HRS3 Restraint Anchor



AX04 Body Anchor

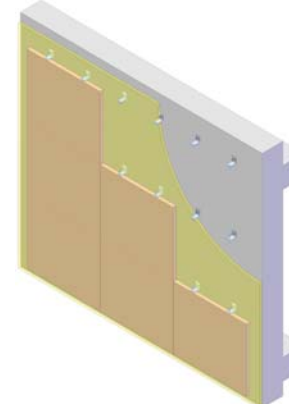


HA L Anchor Fixing system:

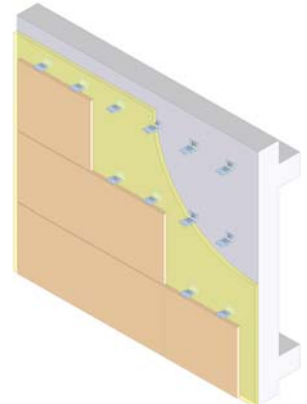
- Fixing to concrete with expansion bolts. Minimum 20 mm and larger stone sizes are applicable.
- Various types to fit a range of loads and projection sizes.
- Installation at horizontal joints only.
- Limited adjustability is available.



HA01 L Anchor



HA04 L Anchor

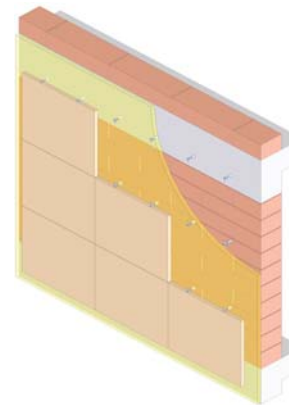


HSD Mortar Anchor fixing system:

- Fixing to masonry with mortar.
- Various types to fit a range of loads and projection sizes.
- Installation at horizontal and vertical joints.
- Three dimensional adjustability.



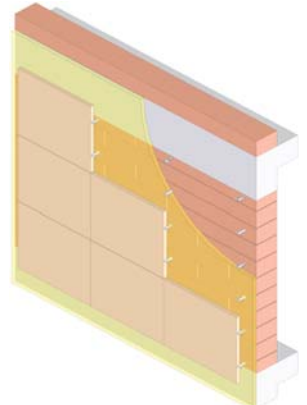
HSD04 Mortar Anchor



HRD03 Mortar Anchor



HSD02 Mortar Anchor

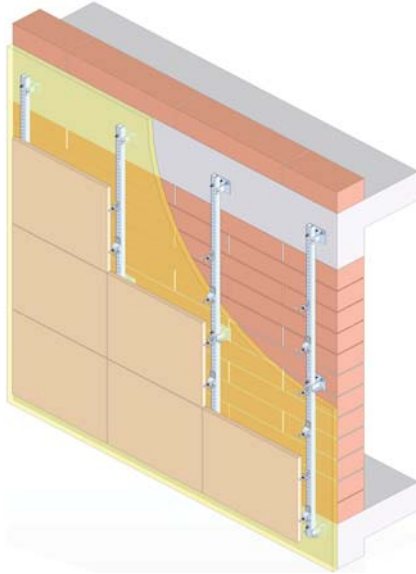


Application Examples

Natural Stone Fixing Systems - Indirect Installation

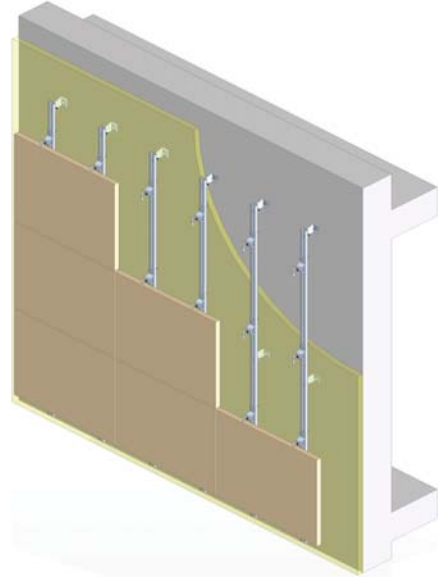
HMPA-HC2 sub channel fixing system:

- High load bearing and adjustable sub channel system.
- Fast and easy fixing of stone slabs.
- Minimum projection size is 90 mm and maximum is 260 mm.
- Ideal for heavy loads and large projection sizes.
- Anchors are fixed to channels with hex bolts and hex nuts.

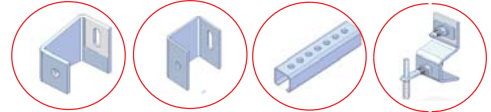


HMPB-HC1 sub channel fixing system:

- Easy to assemble sub channel system.
- Easy to install with uncomplicated elements.
- Minimum projection size is 110 mm and maximum is 200 mm.
- Ideal for restoration of facades.
- Anchors are fixed to channels with hex bolts and hex nuts.



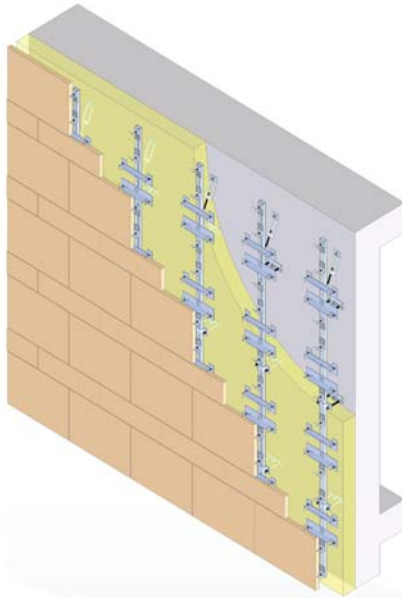
HCSP2 Chan. Sup. **HCRS2** Chan. Rest. **HMPA** U Channel **HZ02** Z Anchor **HRS1** Rest. anchor



HCSP1 Chan Sup. **HCRS1** Chan. Rest. **HMPB** Channel **HZ02** Z Anchor

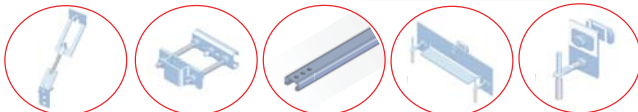
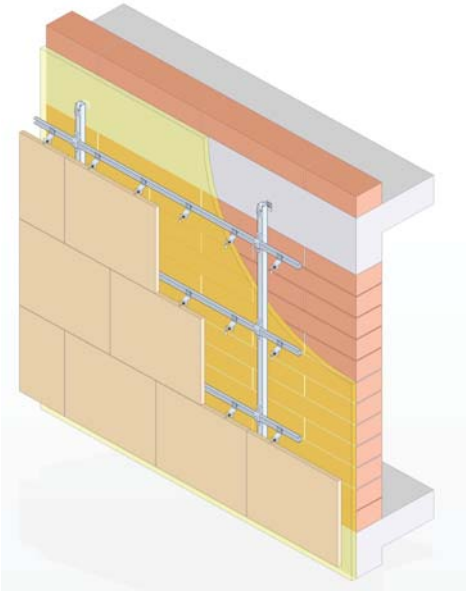
ATS sub channel fixing system:

- Adjustable and easy to use sub channel system.
- Fast and easy fixing of stone slabs.
- Minimum projection size is 160 mm and maximum projection size is 360 mm.
- Ideal for varying projection sizes and slab dimensions.
- Anchors are fixed to toothed channels with lock nuts and hex bolts.



HMPC-HC1H sub channel system:

- Adjustable sub channel system with horizontal channels.
- Quick adjustability at horizontal axis.
- Minimum projection size is 150 mm and maximum is 240 mm.
- Ideal for staggered patterned facades.
- Anchors are fixed to channels with lock nuts and hex bolts.



ATS-A Chan. Sup. **ATS-B** Chan. Rest. **HMPS** Toothed ch. **ATS-HA** Special anc. **ATS-HZ** Z Anchor



HCSP1 Chan. Sup. **HCRS1** Chan. Rest. **HMPC** C Channel **HMPC** C Channel **HZ01** Z Anchor